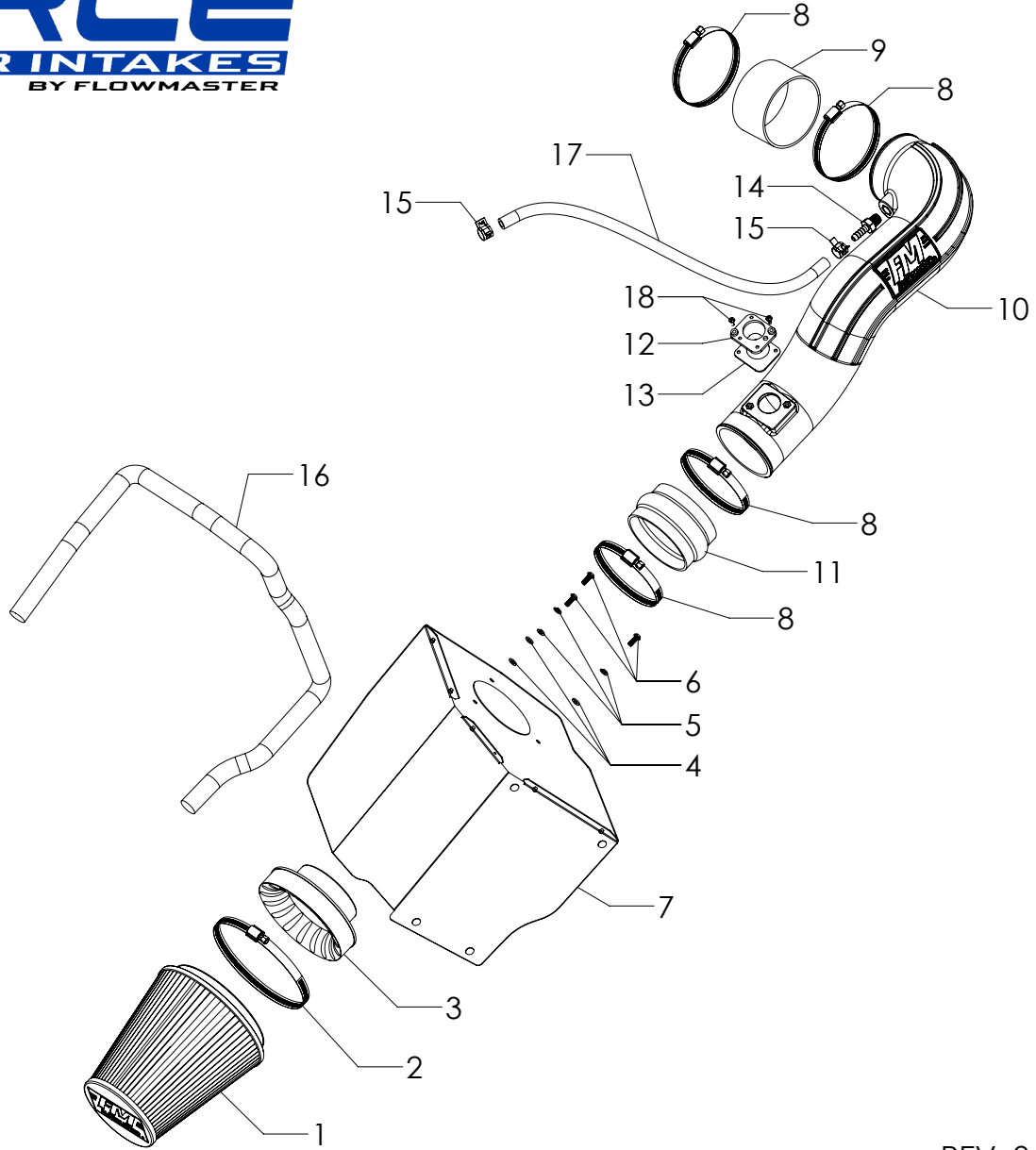




Installation Instructions for: SYSTEM # 615120

2009-2014 GMC Trucks & SUVs
with 4.8L, 5.3L, 6.0L & 6.2L Engines

NOT LEGAL FOR SALE OR USE ON ANY POLLUTION-CONTROLLED MOTOR VEHICLE IN CALIFORNIA OR IN STATES THAT HAVE ADOPTED CALIFORNIA EMISSION PROCEDURES.



REV. 9/14/17

ITEM NO.	PART NUMBER	DESCRIPTION	QTY.
1		AIR FILTER 8-5/8" x 6" DIA	1
2	AF1001	SCREW CLAMP, #104 (4-1/8" - 7")	1
3	AF6002	ADAPTER, AIR FILTER 4" x 6"	1
4	HW319	FLAT WASHER, M6	3
5	HW318	LOCK WASHER, M6	3
6	HW244	SCREW, M6 x 1.0 x 16MM	3
7	AF3011	HEAT SHIELD, 09-14 GM TRUCK & SUV	1
8	MC400H	SCREW CLAMP, #64 (3-9/16" - 4-1/2")	4
9	AF4050	COUPLER, STRAIGHT 4" I.D. x 2-1/2" L	1

ITEM NO.	PART NUMBER	DESCRIPTION	QTY.
10	AF2042	INTAKE TUBE, 09-14 GM TRUCK & SUV	1
11	AF4051	COUPLER, FLEX 4" I.D. x 2-1/2" L	1
12	AF7005	ADAPTER, MAF SENSOR, 09-14 GM TRUCK & SUV	1
13	GA144	GASKET, MAF SENSOR, 09-14 GM TRUCK & SUV	1
14	AF4040	FITTING, 3/8" BARB TO 1/4" NPT MALE	1
15	MC002P	PINCH CLAMP, 3/8" HOSE	1
16	49000061	GASKET, HEAT SHIELD	54"
17	49000065	HOSE, 3/8" I.D.	18"
18	HW254	SCREW, M4 x 0.7 x 25MM	2

REVIEW THE INSTRUCTIONS AND VERIFY THE KIT CONTENTS:

1. Please take a moment to read and understand these instructions before installing your Flowmaster cold air intake kit.



2. Use the parts drawing and list (front page) to verify your kit's contents.

In the unlikely event that any parts are missing, please contact FLOWMASTER Technical Support for replacements.

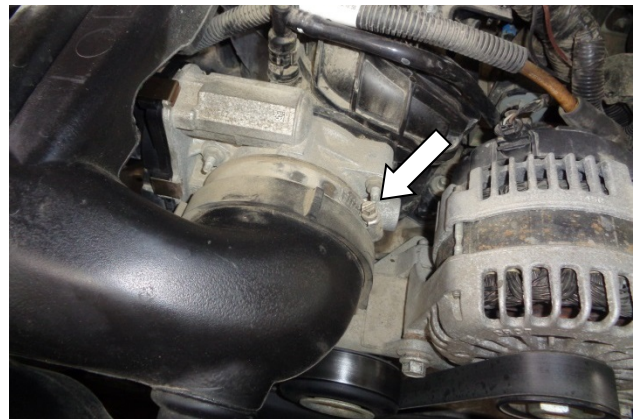
REMOVE THE FACTORY AIR INTAKE SYSTEM:

NOTES

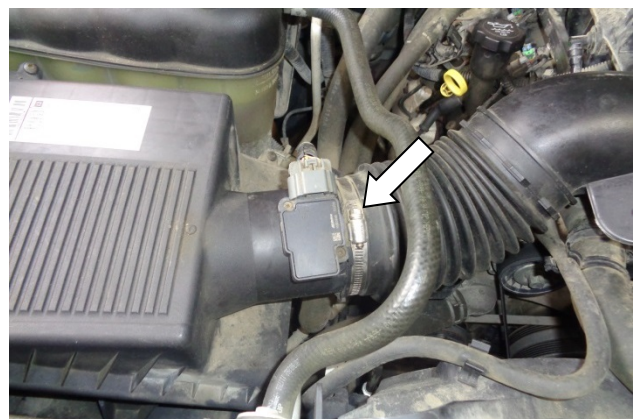
- We highly recommend that you retain all factory air intake system parts.
 - Please refer to vehicle manufacturer's recommendations regarding removal of factory components.
 - Disconnecting the negative battery cable erases pre-programmed electronic memories. Write down all memory settings before disconnecting the negative battery cable. Some radios will require an anti-theft code to be entered after the battery is reconnected. The anti-theft code is typically supplied with your owner's manual. In the event your vehicle's anti-theft code cannot be recovered, contact an authorized dealership to obtain your vehicle's anti-theft code.
3. **Turn off the vehicle's ignition and disconnect the negative battery cable.**



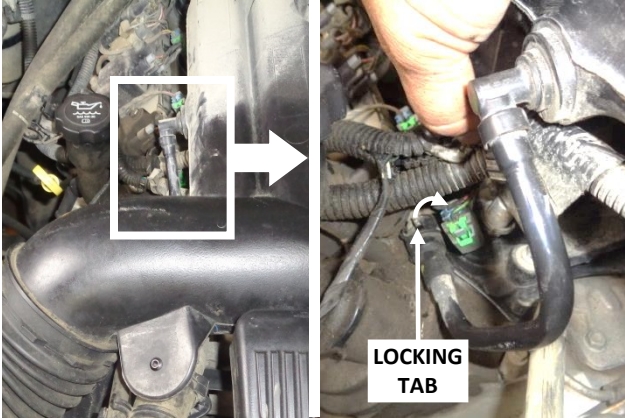
4. Remove the engine appearance cover.



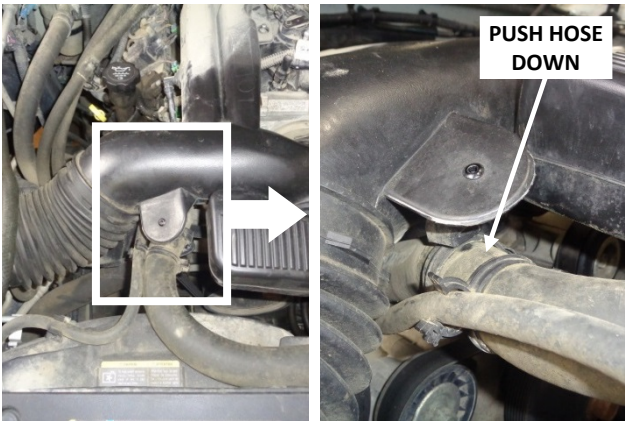
5. Loosen the screw clamp securing the intake duct to the throttle body.



6. Loosen the screw clamp securing the airbox to the intake duct.



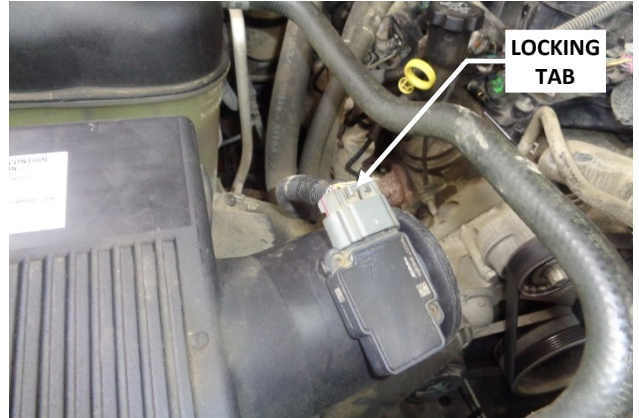
7. Locate the PCV tube coming off the air duct. Disconnect the tube from the engine by releasing the locking tab and pulling the line straight off.



8. Separate the hose clamp from the intake duct by carefully pushing down on the large coolant hose.



9. Separate the intake duct from the airbox and throttle body, and remove the duct from the vehicle.



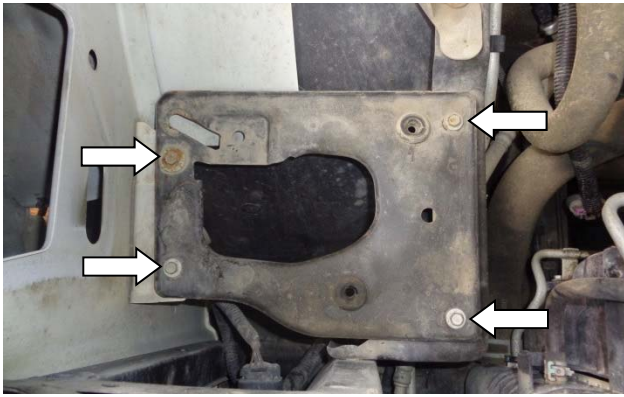
10. Disconnect the electrical plug from the Mass Airflow (MAF) sensor by squeezing the locking tab, then pulling the plug straight off the sensor.



11. Remove the airbox by lifting up its inboard side (to release the mount pins from their rubber grommets), then sliding the airbox inboard (to release it from its shelf).

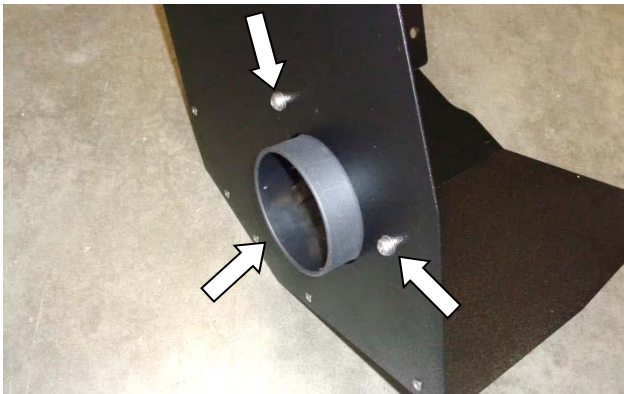


12. Remove the MAF sensor from the airbox, but leave the o-ring on the sensor. **CAUTION: The sensor is delicate!** Handle it with care, and keep it in a safe location until reinstallation.



13. Remove the airbox shelf by removing its 4 mount bolts. Retain the bolts for reinstallation at Step 16.
NOTE: If the bolts are different lengths, note the length of each bolt and its location, to maintain proper bolt clearances at reinstallation.

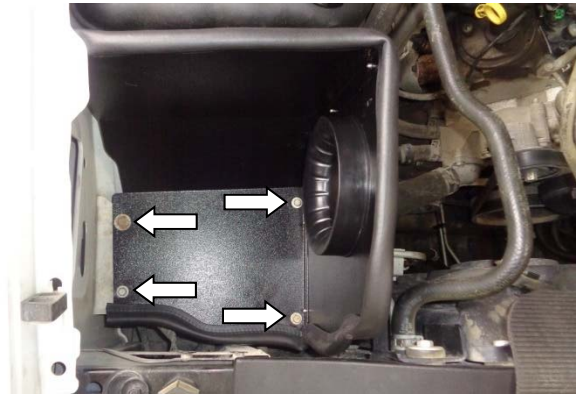
ASSEMBLE AND INSTALL YOUR FLOWMASTER COLD AIR INTAKE SYSTEM:



14. Assemble the air filter adapter (3) to the heat shield (7) using the M6 screws (6), lock washers (5) and flat washers (4).



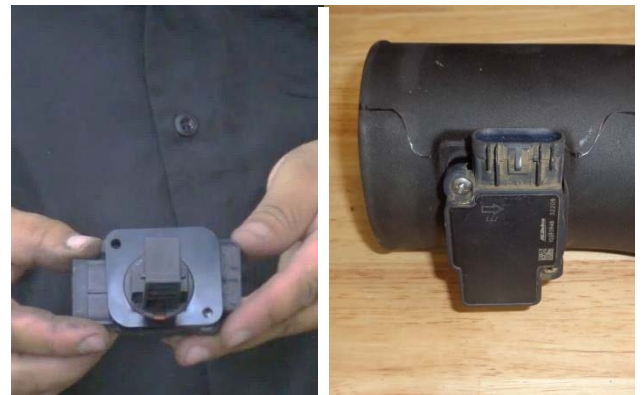
15. Attach the gasket (16) to the heat shield. Starting at the bottom of the front edge, firmly press the seal onto the edge, gradually working your way around. At the bottom of the opposite edge, trim the seal using metal-cutting shears.



16. Use the 4 bolts removed at Step 13 to install the assembled heat shield in the vehicle.
NOTE: If the bolts are different lengths, be sure to use the correct length bolt at each location, as determined at Step 13.



17. Apply 2 wraps of nylon thread tape to threads of the 3/8" barbed fitting (14), and install it in the intake tube (10).



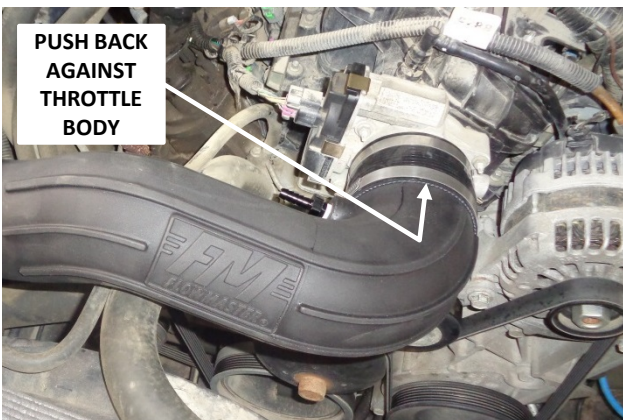
18. Install MAF sensor adapter (12) on the sensor, ensuring proper alignment at the pin. (Lightly lubricate the sensor o-ring if required.) Then place the gasket (13) on the sensor and adaptor, and install the sensor in the intake tube using the two M4 screws (18).



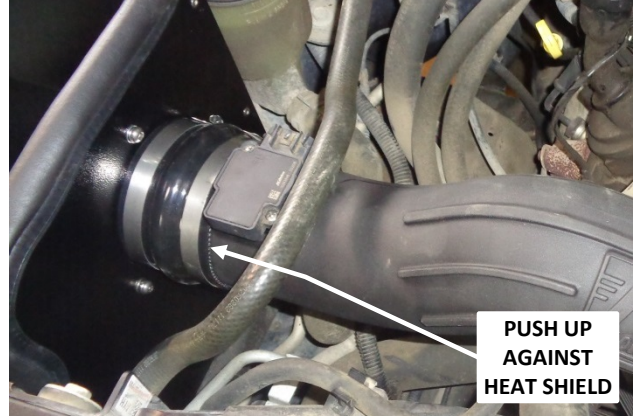
19. Install two screw clamps (8) on the flex coupler (11), and install the coupler on the filter end of the intake tube. Snug (but do not yet tighten) just the clamp on the tube, and leave the other clamp loose.



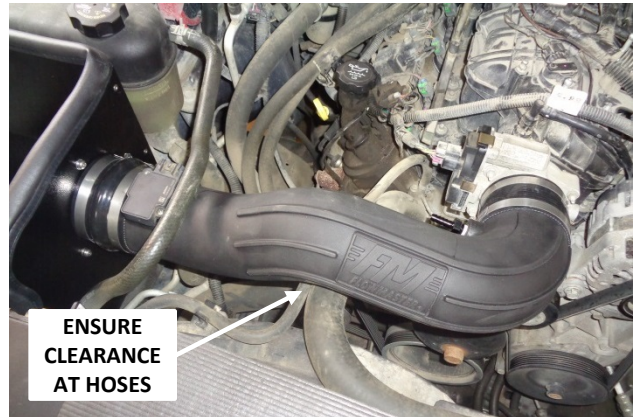
20. Install the other two screw clamps (8) on the straight coupler (9), and install the coupler on the throttle body end of the tube. Snug (but do not yet tighten) just the clamp on the tube.



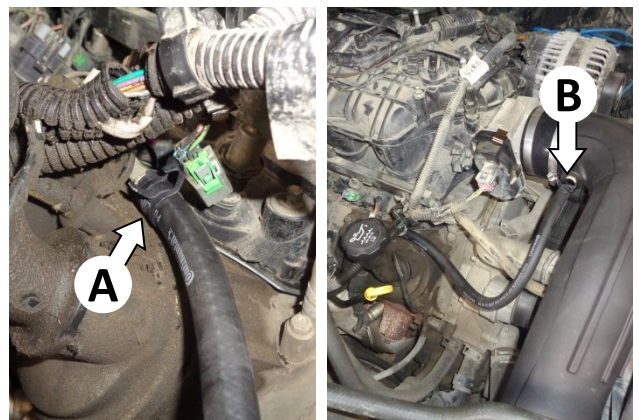
21. Install the intake tube in the vehicle. Push the straight coupler back against the throttle body and tighten only the throttle body clamp.



22. Push the flex coupler up flush against the heat shield and tighten only the heat shield clamp.



23. Center the tube between the couplers, and rotate it so as to avoid contact with any hoses. Then tighten the tube clamps.



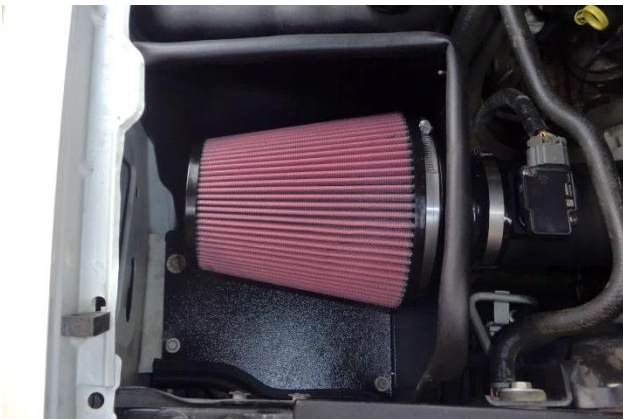
24. Secure one end of the 3/8" hose (17) to the engine PCV port (A) with a pinch clamp (15). Cut the hose to length, and secure the other end to the barbed fitting (B) with the other pinch clamp.



25. Push the MAF sensor plug onto the sensor until it clicks, then verify the connection is secure.



27. Install the engine appearance cover.



26. Slip screw clamp (2) onto air filter (1), install the filter on the filter adapter, and tighten the clamp.



Congratulations, the installation of your FLOWMASTER cold air intake kit is now complete!