

# Installation instructions

## For set # 3.1171

### GM TRUCK Multi-application transmission mount.

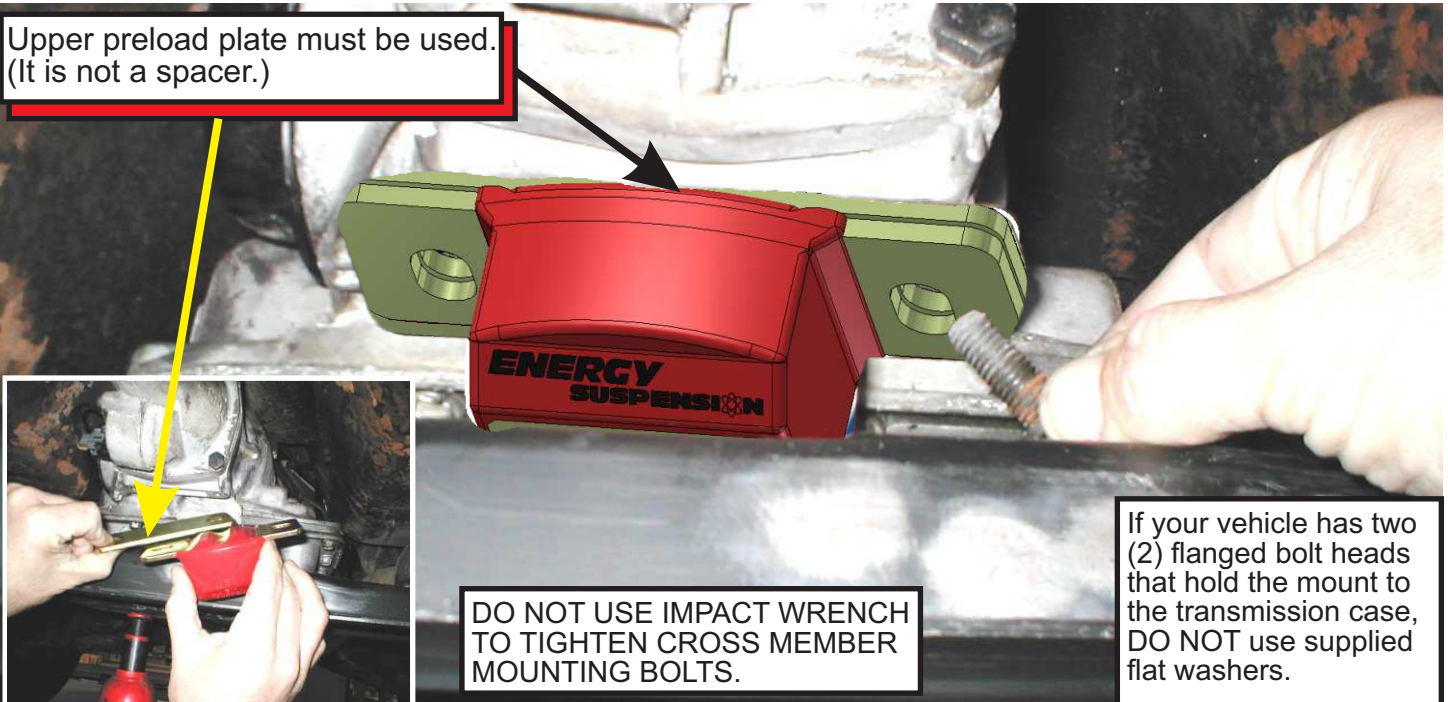


1131 VIA CALLEJON, SAN CLEMENTE, CA 92673

© 2017 Energy Suspension. All rights reserved.  
May not be reproduced, in any form, or by any means,  
without the written consent of Energy Suspension.

**Important - Please READ:** It is recommended that if you are unfamiliar with this type of work that you refer to a qualified service center specializing in this type of work. It is also recommended that if you choose to do this work yourself that a factory service manual be obtained for the proper procedures pertaining to component removal, replacement and proper torque specifications for your vehicle. This instruction set is intended as a guideline for the safe installation of Energy Suspension's polyurethane bushings, once you have removed the factory components from your vehicle. Wheel alignment is almost always disturbed when suspension components are removed or replaced. It is recommended that you have the alignment checked on your vehicle at a qualified alignment shop. Prior to installation, make sure that your vehicle is in top mechanical condition and that there are no suspension or steering related problems. These components have been designed to work only with a vehicle that is in good state of repair. No matter how carefully we design our parts, this is one area we have no control over and cannot be held responsible. The installation of these components may void the factory warranty for your vehicle. Please contact your local dealership for details concerning the factory warranty before installation. Energy Suspension recommends that you thoroughly read over all the installation instructions and check all P/N's and quantities in the Parts List before you start. Call customer service at 949-361-3935 if the parts in your kit do not match this Parts List.

Upper preload plate must be used.  
(It is not a spacer.)

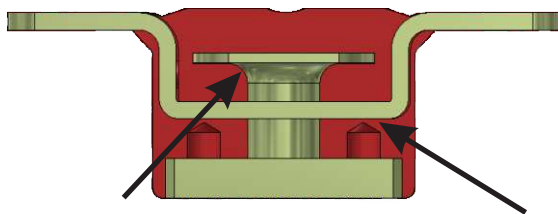


**DO NOT USE IMPACT WRENCH  
TO TIGHTEN CROSS MEMBER  
MOUNTING BOLTS.**

If your vehicle has two  
(2) flanged bolt heads  
that hold the mount to  
the transmission case,  
DO NOT use supplied  
flat washers.

Before installing the new mount, be sure to check the transmission crossmember for cracks or damage at the slotted hole areas. Repair or replace the crossmember if any damage is evident. On high performance(race condition) applications, reinforcing the area around the mounting point of the crossmember is recommended. This type of crossmember has an inherent problem with stress cracks around the bolt holes. Always check the front engine mounts and replace if necessary.

**Tighten all fasteners to factory specifications.**



Side view (cutaway) showing safety interlock



Install mount  
with slots  
facing the  
same as the  
O.E. mount

The urethane transmission mount was  
designed for use as a single center bolt  
mounting application.

**17P17687**  
20/JUN/17 BRH ECN 17036