



# 13236 INSTALLATION INSTRUCTIONS

Safety glasses should be worn at all times while installing this product.

**YEARS:** 2011-PRESENT  
2015-PRESENT

**MAKE:** DODGE  
DODGE/CHRYSLER

**MODEL:** CHALLENGER  
CHARGER/300S/300C

**STYLE:** SEDAN  
SEDAN

**WARNING: NEVER EXCEED YOUR VEHICLE MANUFACTURER'S RECOMMENDED TOWING CAPACITY**  
For more information log onto [www.curtmfg.com](http://www.curtmfg.com) & for helpful towing tips log onto [www.hitchinfo.com](http://www.hitchinfo.com)

**WEIGHT CARRYING:**  
TRAILER WEIGHT: 3500 LBS.  
TONGUE WEIGHT: 350 LBS.

**WARNING:**  
WE RECOMMEND THE USE OF 18050 STABILIZING STRAPS FOR ALL NON-TRAILER (WHEEL-LESS) LOADS. PLEASE SEE THE CURT CATALOG OR VISIT US ONLINE AT [WWW.CURTMFG.COM](http://WWW.CURTMFG.COM) FOR FURTHER INFORMATION.

**PRO INSTALL TIME: 20 MIN.**  
**NOVICE INSTALL TIME: 45 MIN.**

IF YOU ARE HESITANT TO UNDERTAKE THIS TASK ON YOUR OWN, CONTACT AN AUTHORIZED CURT INSTALLER FOR ADDITIONAL ASSISTANCE.

- INSTALLATION TIPS:**
- BEFORE YOU BEGIN INSTALLATION, READ ALL INSTRUCTIONS THOROUGHLY.
  - TO EASE INSTALLATION, 2 PEOPLE MAY BE REQUIRED.
  - USING PROPER TOOLS WILL GREATLY IMPROVE THE QUALITY OF THE INSTALL AND REDUCE THE TIME REQUIRED.
  - NEED HELP OR HAVE SOME QUESTIONS? CALL TECHNICAL SUPPORT AT 800.798.0813

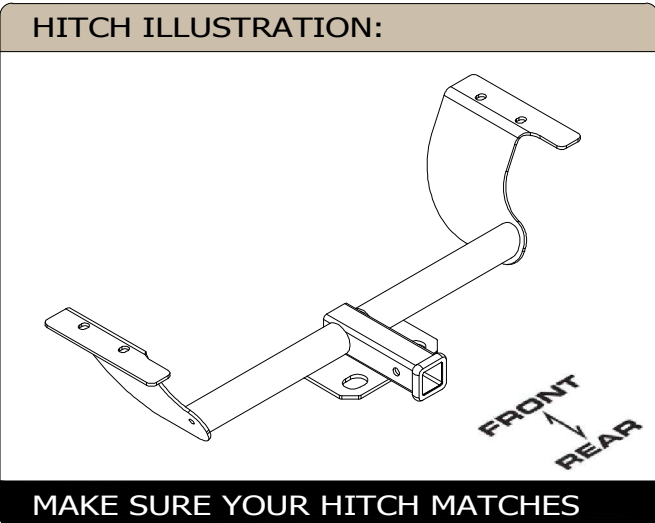


**INSTALLATION REQUIRES:**

|                                   |   |                                |
|-----------------------------------|---|--------------------------------|
| <br><b>RATCHET</b>                | <br><b>TORQUE WRENCH</b>                          | <br><b>6" SOCKET EXTENSION</b> |
| <br><b>UNIVERSAL JOINT SOCKET</b> | <br><b>13mm<br/>15mm<br/>19mm<br/>3/4" SOCKET</b> | <br><b>SAFETY GLASSES</b>      |
|                                   |   |                                |
|                                   |   |                                |

**LEVEL OF DIFFICULTY: MODERATE**

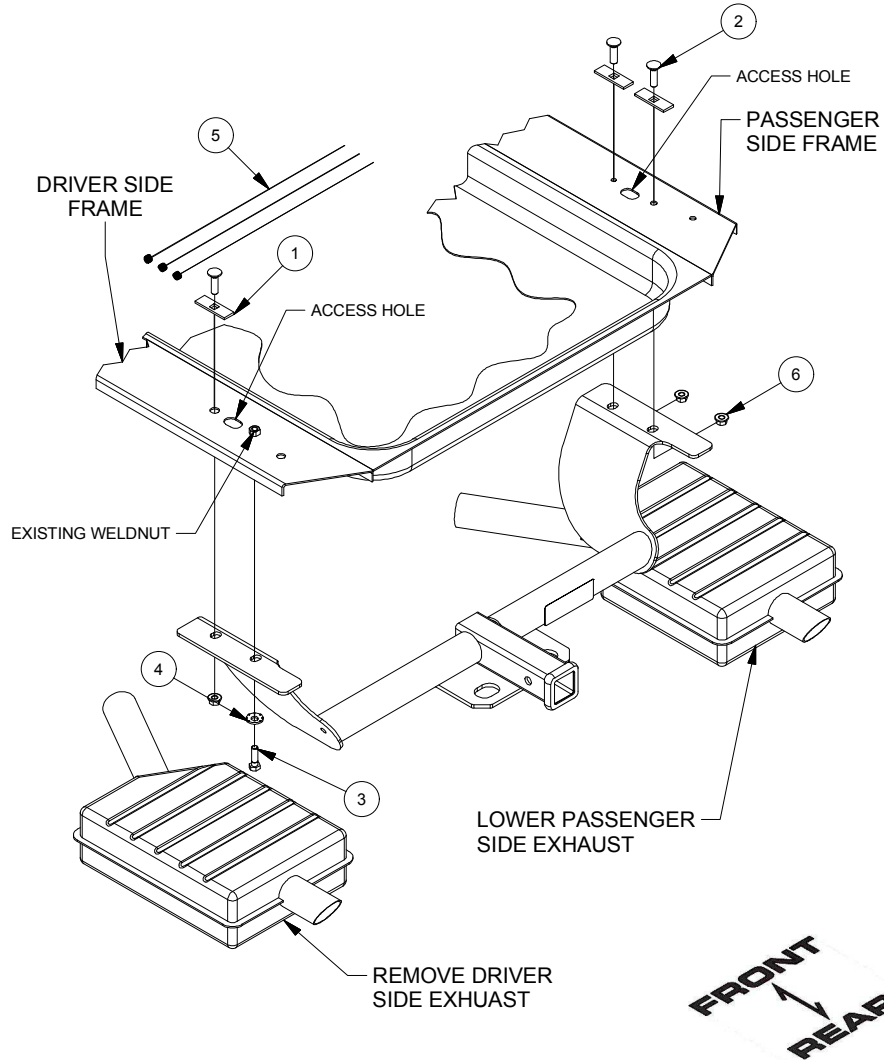
| EASY | MODERATE                               | CHALLENGING |
|------|--|-------------|
|      | FISHWIRE HARDWARE                      |             |
|      | REMOVE EXHAUST ISOLATORS               |             |
|      | TEMPORARILY REMOVE DRIVER SIDE MUFFLER |             |
|      | NO DRILLING REQUIRED                   |             |
|      |  |             |



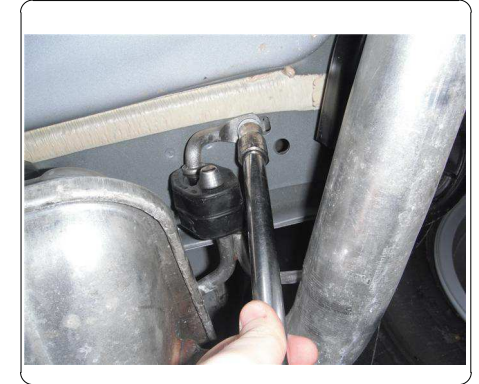
**PERIODICALLY CHECK THIS RECEIVER HITCH TO ENSURE ALL FASTENERS ARE TIGHT AND ALL STRUCTURAL COMPONENTS ARE SOUND**  
CURT Manufacturing LLC. warrants this product to be free of defects in material and/or workmanship at the time of retail purchase by the original purchaser. If the product is found to be defective, CURT Manufacturing LLC. may repair or replace the product at their option, when the product is returned, prepaid, with proof of purchase. Alteration to, misuse of, or improper installation of this product voids the warranty. CURT Manufacturing LLC.'s liability is limited to repair or replacement of products found to be defective, and specifically excludes liability for incidental or consequential loss or damage.  
**For more information log onto [www.curtmfg.com](http://www.curtmfg.com) , & for helpful towing tips log onto [www.hitchinfo.com](http://www.hitchinfo.com)**  
This product complies with safety specifications and requirements for connecting devices and towing systems of the state of New York, V.E.S.C.Regulation V-5 and SAE J684.

## INSTALLATION WALKTHROUGH:

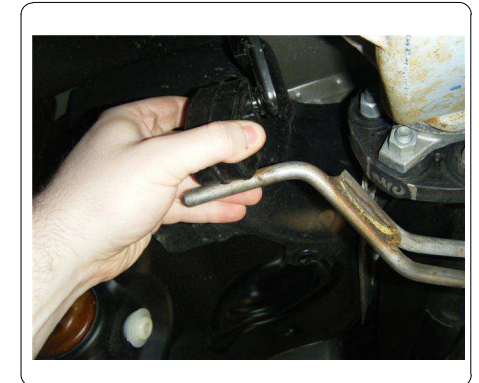
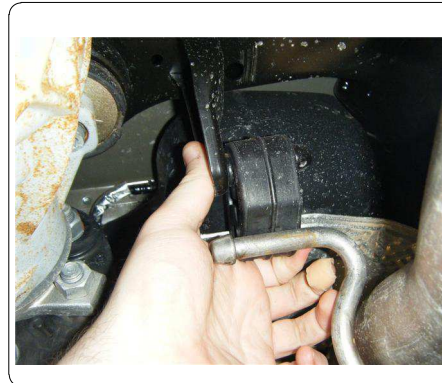
| Parts List |     |                 |  |
|------------|-----|-----------------|--|
| ITEM       | QTY | PART NUMBER     | DESCRIPTION                            |
| 1          | 3   | CM-SP40         | .188 x 1.00 x 3.00" SQUARE HOLE SPACER |
| 2          | 3   | 1/2-13 x 1 3/4  | CARRIAGE BOLT                          |
| 3          | 1   | M12-1.75 x 40mm | HEX BOLT                               |
| 4          | 1   | 1/2             | CONICAL TOOTHED WASHER                 |
| 5          | 3   | 1_2 FISHWIRE    | 1/2" FISHWIRE                          |
| 6          | 3   | HFN 1213        | HEX FLANGE NUT                         |



1. Locate and remove (2) exhaust isolators near muffler on driver and passenger side of vehicle. Save bolts for reinstallation.



2. Locate and remove (2) rubber isolators from exhaust pipe.



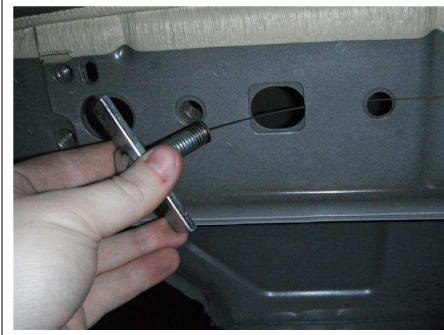


## INSTALLATION WALKTHROUGH:

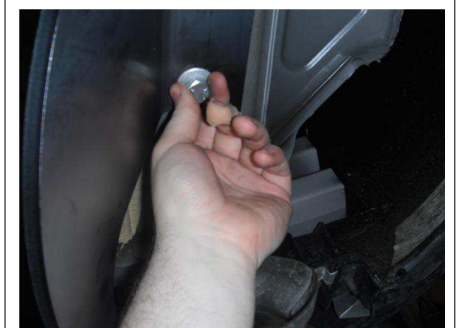
3. On V6 models: Locate and remove nut from exhaust clamp that holds the driver side muffler. Save nut for reinstallation.
- On V8 models: Locate and remove (2) nuts with springs attaching driver side muffler. Save nuts and springs for reinstallation.
- Slide and remove temporarily driver side muffler/tube off of remaining exhaust system.



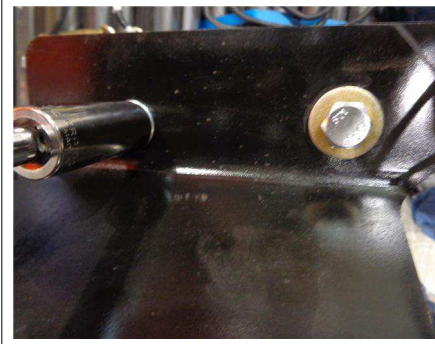
4. Fishwire 1/2" carriage bolts and CM-SP40 spacers through access hole on driver and passenger side frame rail. Pull hardware through existing holes (2 on passenger side and 1 on driver side).



5. Raise hitch into position by placing passenger side of hitch over the passenger side muffler first and then raise the driver side of hitch. Secure hitch to existing weldnuts with supplied M12 hardware and conical toothed washers. Attach 1/2" hex flange nuts onto carriage bolts.



6. Torque 1/2" hardware to 110 lb-ft and M12 hardware to 79 lb-ft.



## INSTALLATION WALKTHROUGH:

7. On V6 Models: Slide driver side muffler/tube back into position against stud on exhaust system. Secure clamp with nut from Step 3.
- On V8 Models: Reattach driver side muffler onto studs with nuts and springs from Step 3.



8. Raise exhaust back into position and reattach (2) exhaust isolators. Reinstall (4) exhaust hangers removed in Step 1.

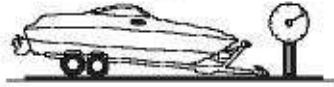




## TOWING SAFETY INFORMATION

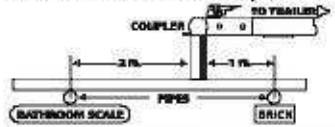
### Gross Trailer Weight / GTW

The Gross Trailer Weight is the weight of the trailer & cargo. Measure this by putting the fully loaded trailer on a vehicle scale.



### Tongue Weight / TW

The downward force that is exerted on the hitch ball by the coupler. The tongue weight will vary depending on where the load is positioned in relationship to the trailer axle(s). To measure the tongue weight, use either a commercial scale or a bathroom scale with the coupler at towing height. When using a bathroom scale with heavier tongue weights, use the method shown and multiply the scale reading by 3.



### Weight Carrying / WC

The total weight of both the trailer and the cargo inside. Never exceed the weight capacity of your trailer hitch.

### Weight Distribution / WD

Used to balance the weight of the cargo between the front and rear wheels throughout the trailer, allowing for better steering, braking, and level riding.



### Sway Control

A device used to reduce the lateral movements of the trailer that are caused by the wind. This works in conjunction with a weight distribution hitch. Do not use this on a class 1 or 2 hitch, or with surge brakes.

### How Much Can You Safely Tow?

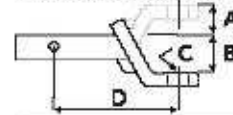
| TONGUE WEIGHT (lb)  | 1000   | 2000   | 3000   | 4000   | 5000   | 6000   | 7000   | 8000   | 9000   | 10,000 |
|---|--------|--------|--------|--------|--------|--------|--------|--------|--------|--------|
| Tongue weight should be about 10 to 15 percent of the gross trailer weight. |        |        |        |        |        |        |        |        |        |        |
| CLASS 1   |        |        |        |        |        |        |        |        |        |        |
| CLASS 2   |        |        |        |        |        |        |        |        |        |        |
| CLASS 3   |        |        |        |        |        |        |        |        |        |        |
| CLASS 4   |        |        |        |        |        |        |        |        |        |        |
| CLASS 5   |        |        |        |        |        |        |        |        |        |        |
| TRAILER TYPE  |        |        |        |        |        |        |        |        |        |        |
| Coupler   | 1 1/2" | 1 3/4" | 1 3/4" | 1 3/4" | 1 3/4" | 1 3/4" | 1 3/4" | 1 3/4" | 1 3/4" | 1 3/4" |
| 1/2" Tr.  | 1100   | 1200   | 1300   | 1400   | 1500   | 1600   |        |        |        |        |
| 3/4" Tr.  | 1100   | 1200   | 1300   | 1400   | 1500   | 1600   |        |        |        |        |
| 1" Tr.  | 2100   | 2400   | 2700   | 3000   | 3300   | 3600   | 3900   | 4200   | 4500   | 4800   |
| 1 1/2" Tr.  | 1100   | 1200   | 1300   | 1400   | 1500   | 1600   |        |        |        |        |
| 2" Tr.  | 2800   | 3200   | 3600   | 4000   | 4400   | 4800   | 5200   | 5600   | 6000   | 6400   |
| 2 1/2" Wheel  |        |        |        |        |        |        |        |        |        |        |

Refer to owner's manual for towing capabilities and limitations.

### Ball Mount

The ball mount is placed inside the opening of the receiver hitch which is mounted to the vehicle. Make sure a hitch pin and clip is properly securing the ball mount to the receiver hitch before you begin towing.

• A: Rise. B: Drop. C: Hole Size. D: Length.



### Trailer Ball

The connection from the hitch to the trailer. There are many factors that determine the correct hitch ball:

- Number one is the hitch ball's gross trailer weight rating.
- The mounting platform must be at least 3/8" thick.
- The hole diameter must not be more than 1/16" larger than the threaded shank.
- Every time you tow, check the nut and lock washer to make sure they are fastened securely.



• A: Ball Dia. B: Shank Dia. C: Shank Length. D: Shank Rise.

### Coupler

The component that is placed over the trailer ball to connect the vehicle to the trailer. Be sure that the coupler size matches the size of the hitch ball and that the coupler handle is securely fastened. To determine what size hitch ball you need for your application you will need to know the size of coupler that is on the trailer. Be sure your coupler is properly adjusted to the ball you are using.

NOTE: For added security the use of safety devices such as Coupler Safety Pins and Locks is strongly recommended.

### Safety Chains

Safety chains are a requirement and should be crossed under the tongue of the trailer so that the tongue will not drop to the road if it becomes separated from the hitch. Always leave enough slack so you can turn. Never allow the safety chains to drag on the ground and never attach the chains to the bumper.

Trailer Classification: Safety Chain Breaking Force - Minimum

Class 1: 2,000 lbs. (8.9 kN)

Class 2: 3,500 lbs. (15.6 kN)

Class 3: 5,000 lbs. (22.2 kN)

The strength rating of each length of safety chain or its equivalent and its attachments shall be equal to or exceed in minimum breaking force the GVWR (Gross Vehicle Weight Rating) of the trailer.

### Electrical

Trailer lights, Electric Brakes, Break-away systems - Every time you tow, be sure to check that all components are working properly.

Wiring identification by color:



GREEN YELLOW BROWN WHITE RED BLUE PURPLE

# 13236 DODGE/ CHRYSLER CHALLENGER/CHARGER/300S/300C

1/10/2017

PAGE 1 of 2

GROSS LOAD CAPACITY WHEN USED AS A WEIGHT CARRYING HITCH: 3500 LBS. TRAILER WEIGHT & 350 LBS. TONGUE WEIGHT.

WARNING: ALL NON-TRAILER LOADS APPLIED TO THIS PRODUCT MUST BE SUPPORTED BY 18050 STABILIZING STRAPS.



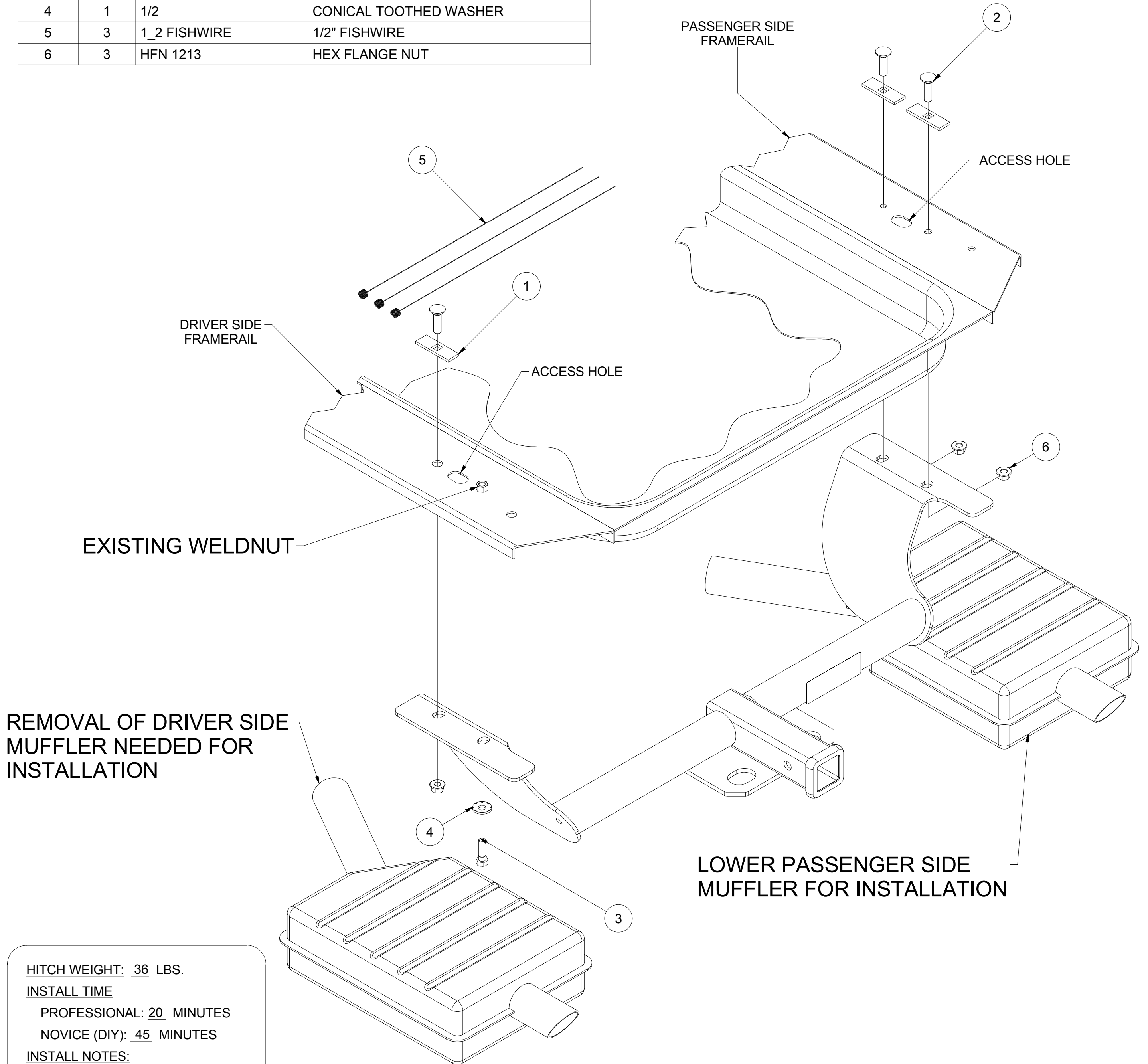
**WARNING: \*\* FAILURE TO PROPERLY SUPPORT NON-TRAILER LOADS WILL VOID PRODUCT WARRANTY \*\***

**WARNING: \*\*\* DO NOT EXCEED VEHICLE MANUFACTURER'S RECOMMENDED TOWING CAPACITY \*\*\***

FOR MORE INFORMATION LOG ONTO [WWW.CURTMFG.COM](http://WWW.CURTMFG.COM) & FOR HELPFUL TOWING TIPS LOG ONTO [WWW.HITCHINFO.COM](http://WWW.HITCHINFO.COM)  
HAVING INSTALLATION QUESTIONS? CALL TECHNICAL SUPPORT AT 1-800-798-0813



| Parts List |     |                 |  |
|------------|-----|-----------------|--|
| ITEM       | QTY | PART NUMBER     | DESCRIPTION                            |
| 1          | 3   | CM-SP40         | .188 x 1.00 x 3.00" SQUARE HOLE SPACER |
| 2          | 3   | 1/2-13 x 1 3/4  | CARRIAGE BOLT                          |
| 3          | 1   | M12-1.75 x 40mm | HEX BOLT                               |
| 4          | 1   | 1/2             | CONICAL TOOTHED WASHER                 |
| 5          | 3   | 1_2 FISHWIRE    | 1/2" FISHWIRE                          |
| 6          | 3   | HFN 1213        | HEX FLANGE NUT                         |



HITCH WEIGHT: 36 LBS.

INSTALL TIME

PROFESSIONAL: 20 MINUTES

NOVICE (DIY): 45 MINUTES

INSTALL NOTES:

No Drill

Temporary Exhaust Removal

**PERIODICALLY CHECK THIS RECEIVER HITCH TO ENSURE THAT ALL FASTENERS ARE TIGHT AND THAT ALL STRUCTURAL COMPONENTS ARE SOUND.**



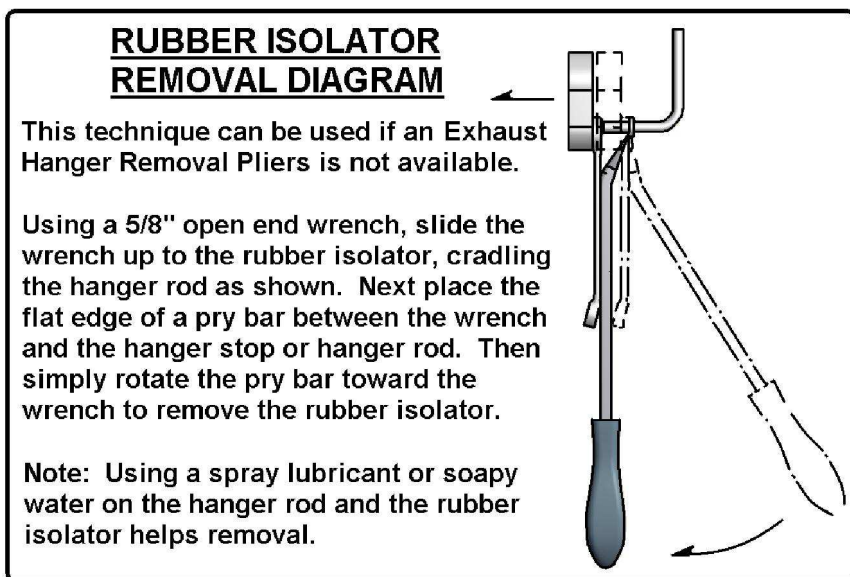
Scan for more information

CURT Manufacturing LLC., warrants this product to be free of defects in material and/or workmanship at the time of retail purchase by the original purchaser. If the product is found to be defective, CURT Manufacturing LLC., may repair or replace the product, at their option, when the product is returned, prepaid, with proof of purchase. Alteration to, misuse of, or improper installation of this product voids the warranty. CURT Manufacturing LLC.'s liability is limited to repair or replacement of products found to be defective, and specifically excludes liability for incidental or consequential loss or damage.

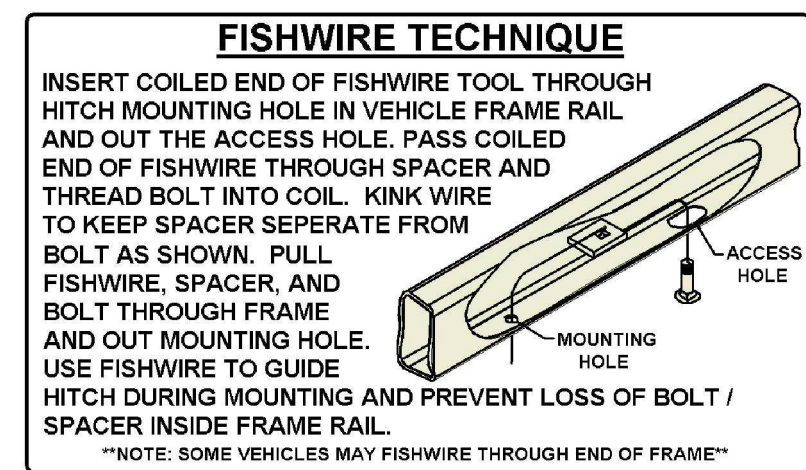
This product complies with safety specifications and requirements for connecting devices and towing systems of the state of New York, V.E.S.C.Regulation V-5 and SAE J684.



HAVING INSTALLATION QUESTIONS? CALL TECHNICAL SUPPORT AT 1-800-798-0813



| TOOLS REQUIRED         |
|------------------------|
| RATCHET                |
| TORQUE WRENCH          |
| 6" SOCKET EXTENSION    |
| UNIVERSAL JOINT SOCKET |
| 13MM SOCKET            |
| 15MM SOCKET            |
| 19MM SOCKET            |
| 3/4" SOCKET            |
| SAFETY GLASSES         |



## INSTALLATION STEPS

**NOTE: FOR VEHICLES WITH WELDED EXHAUST, FASCIA REMOVAL MAY EASE HITCH INSTALLATION -** Remove the plastic push pins holding the wheel well liner to fascia (each side). Pull back wheel well liner to access the hidden screw and remove using 10mm socket on each side. Remove the remaining screws and plastic push pins along the bottom of the fascia including the nuts holding the underbody panel to the trunk pan. Gently remove the fascia and unplug wiring. Set bumper fascia aside for later reinstallation.

1. Locate and remove (2) exhaust isolators near muffler on driver and passenger side of vehicle. Save bolts for reinstallation.
2. Locate and remove (2) rubber isolators from exhaust pipe. (See RUBBER ISOLATOR REMOVAL DIAGRAM)
3. On V6 models: Locate and remove nut from exhaust clamp that holds the driver side muffler. Save nut for reinstallation.  
On V8 models: Locate and remove (2) nuts with springs attaching driver side muffler. Save nuts and springs for reinstallation.  
Slide and remove temporarily driver side muffler/tube off of remaining exhaust system.
4. Fishwire 1/2" carriage bolts and CM-SP40 spacers through access hole on driver and passenger side frame rail. Pull hardware through existing holes (2 on passenger side and 1 on driver side)
5. Raise hitch into position by placing passenger side of hitch over the passenger side muffler first and then raise the driver side of hitch.  
Secure hitch with supplied M12 hardware and conical toothed washers. Attach 1/2" hex flange nuts onto carriage bolts.
6. Torque 1/2" hardware to 110 lb-ft and M12 hardware to 79 lb-ft.
7. On V6 Models: Slide driver side muffler/tube back into position against stud on exhaust system. Secure clamp with nut from Step 3.  
On V8 Models: Reattach driver side muffler onto studs with nuts and springs from Step 3.
8. Raise exhaust back into position and reattach (2) exhaust isolators.  
Reinstall (4) exhaust hangers from Step 1.

**PERIODICALLY CHECK THIS RECEIVER HITCH TO ENSURE THAT ALL FASTENERS ARE TIGHT AND THAT ALL STRUCTURAL COMPONENTS ARE SOUND.**

CURT Manufacturing LLC., warrants this product to be free of defects in material and/or workmanship at the time of retail purchase by the original purchaser. If the product is found to be defective, CURT Manufacturing LLC., may repair or replace the product, at their option, when the product is returned, prepaid, with proof of purchase. Alteration to, misuse of, or improper installation of this product voids the warranty. CURT Manufacturing LLC.'s liability is limited to repair or replacement of products found to be defective, and specifically excludes liability for incidental or consequential loss or damage.

This product complies with safety specifications and requirements for connecting devices and towing systems of the state of New York, V.E.S.C.Regulation V-5 and SAE J684.