



TRAILER HITCHES

1216 Hawaii Rd / PO Box 186
Humboldt, KS 66748
Phone: 620.473.3664
Fax: 620.473.3766
hitches@turnoverball.com
www.turnoverball.com

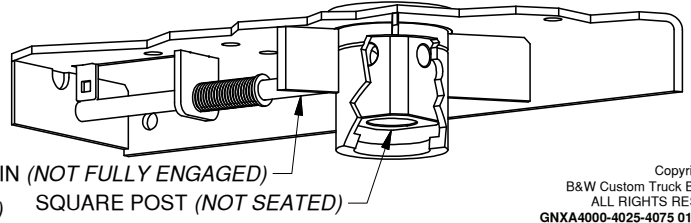
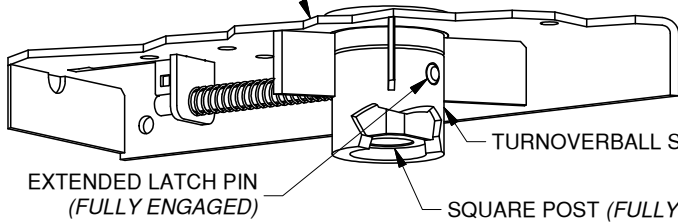
INSTALLATION AND MAINTENANCE

- Turnoverball gooseneck accessories are not designed to be used with plastic bed liners or other additions to the bed floor which prohibits the gooseneck square post from being fully seated inside the Turnoverball socket, or being engaged by the Turnoverball latch pin.
- Retract the latch pin handle and remove the 2-5/16" ball or other Turnoverball accessory from the ball socket. Place the square post of the gooseneck accessory into the Turnoverball socket until it is fully seated. Engage the latch pin. Make sure that the latch pin passes through the square post and reaches all the way through the Turnoverball socket.
- For hitch accessories that remain in the Turnoverball receiver for an extended period of time, B&W recommends lightly lubricating the four corners of the square post with grease.

TYPICAL GOOSENECK HITCH (SHOWN CUTAWAY)

CORRECTLY PINNED

SOCKET POST NOT FULLY SEATED OR PINNED, SAFE TOWING NOT POSSIBLE



Copyright 2017
B&W Custom Truck Beds, Inc.
ALL RIGHTS RESERVED
GNXA4000-4025-4075 01 18 2017



TRAILER HITCHES

1216 Hawaii Rd / PO Box 186
Humboldt, KS 66748
Phone: 620.473.3664
Fax: 620.473.3766
hitches@turnoverball.com
www.turnoverball.com

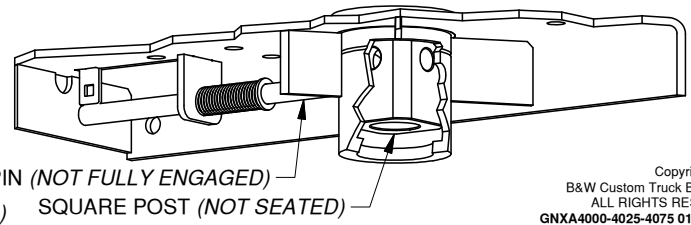
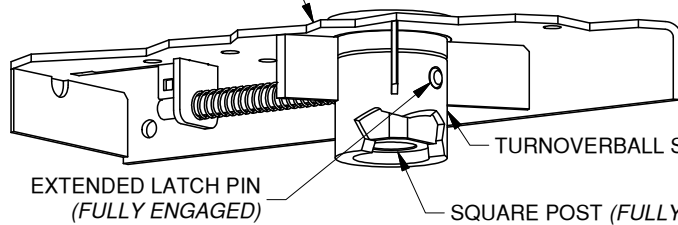
INSTALLATION AND MAINTENANCE

- Turnoverball gooseneck accessories are not designed to be used with plastic bed liners or other additions to the bed floor which prohibits the gooseneck square post from being fully seated inside the Turnoverball socket, or being engaged by the Turnoverball latch pin.
- Retract the latch pin handle and remove the 2-5/16" ball or other Turnoverball accessory from the ball socket. Place the square post of the gooseneck accessory into the Turnoverball socket until it is fully seated. Engage the latch pin. Make sure that the latch pin passes through the square post and reaches all the way through the Turnoverball socket.
- For hitch accessories that remain in the Turnoverball receiver for an extended period of time, B&W recommends lightly lubricating the four corners of the square post with grease.

TYPICAL GOOSENECK HITCH (SHOWN CUTAWAY)

CORRECTLY PINNED

SOCKET POST NOT FULLY SEATED OR PINNED, SAFE TOWING NOT POSSIBLE



Copyright 2017
B&W Custom Truck Beds, Inc.
ALL RIGHTS RESERVED
GNXA4000-4025-4075 01 18 2017



TRAILER HITCHES

1216 Hawaii Rd / PO Box 186
Humboldt, KS 66748
Phone: 620.473.3664
Fax: 620.473.3766
hitches@turnoverball.com
www.turnoverball.com

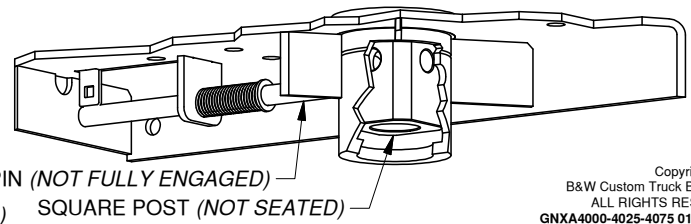
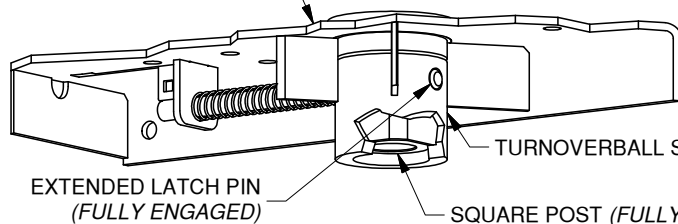
INSTALLATION AND MAINTENANCE

- Turnoverball gooseneck accessories are not designed to be used with plastic bed liners or other additions to the bed floor which prohibits the gooseneck square post from being fully seated inside the Turnoverball socket, or being engaged by the Turnoverball latch pin.
- Retract the latch pin handle and remove the 2-5/16" ball or other Turnoverball accessory from the ball socket. Place the square post of the gooseneck accessory into the Turnoverball socket until it is fully seated. Engage the latch pin. Make sure that the latch pin passes through the square post and reaches all the way through the Turnoverball socket.
- For hitch accessories that remain in the Turnoverball receiver for an extended period of time, B&W recommends lightly lubricating the four corners of the square post with grease.

TYPICAL GOOSENECK HITCH (SHOWN CUTAWAY)

CORRECTLY PINNED

SOCKET POST NOT FULLY SEATED OR PINNED, SAFE TOWING NOT POSSIBLE



Copyright 2017
B&W Custom Truck Beds, Inc.
ALL RIGHTS RESERVED
GNXA4000-4025-4075 01 18 2017