



STEP 1 – PRIOR TO INSTALLATION

- A)** Bushwacker® only approves installing the trail armor according to these written instructions with the hardware provided. **WARNING:** Failure to install according to these instructions will invalidate the warranty. This includes, but is not limited to using alternative installation methods, hardware, or materials. **DO NOT USE:** Loctite, SuperGlue, or similar products on the hardware or the trail armor.
- B) Fit:** Verify the fit of the trail armor to vehicle. (Some filing, sanding, or cutting may be necessary to ensure proper fit).
- C) Painting:** (Optional) if paint is desired it must be done prior to installing trail armor on the vehicle. Clean outer surface with a good grade degreaser. **DO NOT USE LACQUER THINNER OR ENAMEL REDUCER AS A DEGREASER.** Wipe outer surface thoroughly with a tack rag prior to paint. Application of plastic adhesion promoter for TPO plastic as per your paint system manufacturer's recommendations is required. Paint trail armor using a high quality enamel, or polyurethane automotive paint.
- D) Exhaust System:** Modifications may be necessary to maintain a minimum 4" clearance between trail armor and exhaust pipes. (Exhaust gases should not vent directly onto trail armor)
- E) Metal Protection:** All exposed fasteners and bare metal should be treated with rust resistant paint **BEFORE** installing trail armor.
- F) Decals:** Trail Armor may interfere with existing decals on vehicle. If you wish, remove decals prior to installation of trail armor.

Chevrolet Silverado Extended Cab Trail Armor® Rocker Panel & Sill Plate Combo Set

**Set Part #14089
BW14089 Rev-0 05-02-2019**

For complete fitment info visit: www.bushwacker.com

TOOLS FOR EASY INSTALLATION:

- Cleaning Cloth



The material that your product is made from can be recycled. Please also consider recycling the packaging that your product came in.



LIMITED LIFETIME WARRANTY AGAINST ANY MANUFACTURING DEFECTS

- To claim a warranty, you must provide Proof of Purchase.

Included in Hardware Kit:

1.

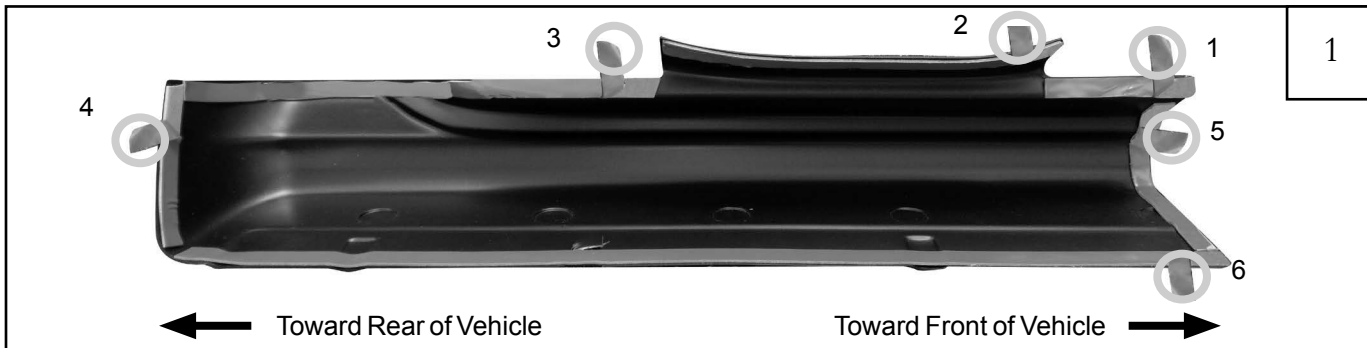


AD1-0008,
ALCOHOL PREP
PAD,

ALCOHOL
PREP
PAD

8 pcs.

Rear Side Panel Installation Procedure (Driver's Side)



Peel back 2" of tape liner from each flange. Using a marker, number the tape tabs as shown:

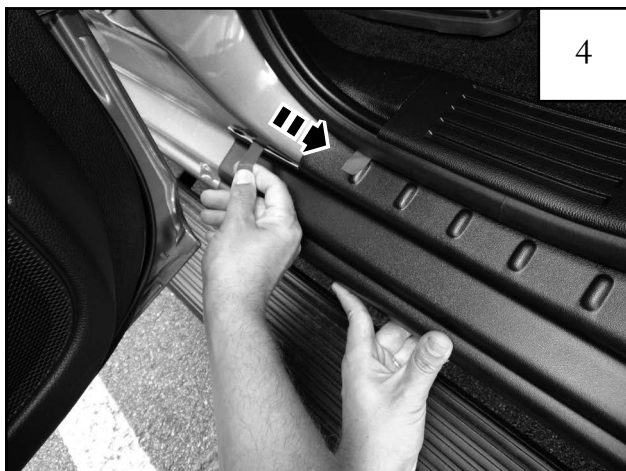
- 1: Tape tab 1.
- 2: Tape tab 2.
- 3: Tape tab 3.
- 4: Tape tab 4. NOTE: This tab must hang down as shown for removal from tape.
- 5: Tape tab 5. NOTE: This tab must hang down as shown for removal from tape.
- 6: Tape tab 6. NOTE: This tab must hang down as shown for removal from tape.



Open vehicle door. Clean all dirt and debris from vehicle then use supplied alcohol wipe where part will attach. *NOTE: Temperature should be at least 60°F for proper tape adhesion.*



Place part on vehicle, making sure to line up edges of part with edges of vehicle. Ensure that all tape tabs are accessible. Firmly press on exposed areas of tape to tack Trail Armor in place. *NOTE: Refer to step 1 for placement of certain tabs.*



Pull tape liner tab 1.



Pull tape liner tab 2.



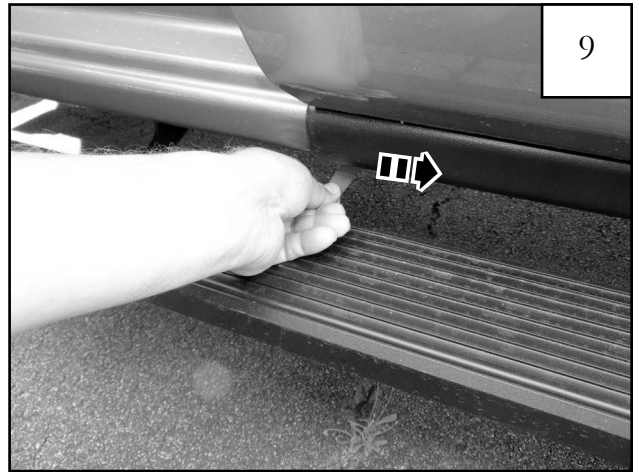
Pull tape liner tab 3.



Pull tape liner tab 4.

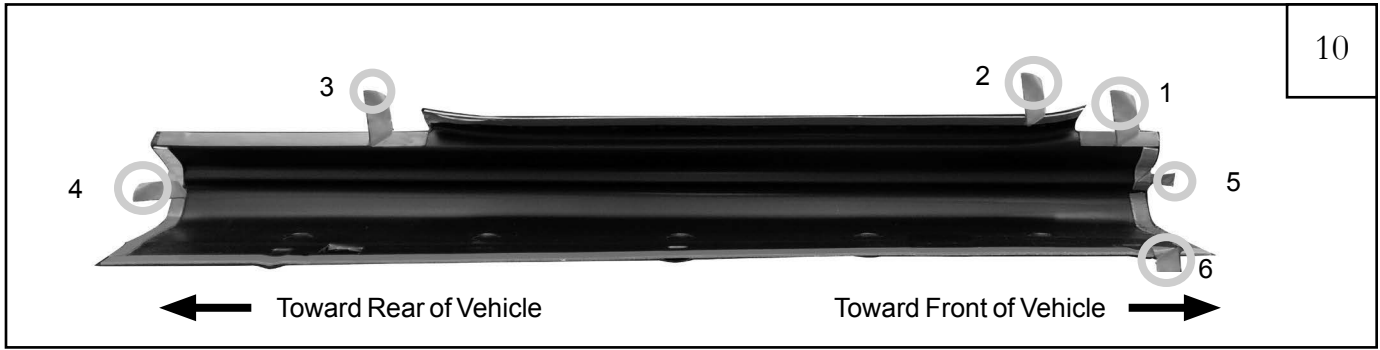


Pull tape liner tab 5. **NOTE:** It may be necessary to partially close door in order to access tab.



Pull tape liner tab 6. **NOTE:** It may be necessary to partially close door in order to access tab.

Front Side Panel Installation Procedure (Driver's Side)



Peel back 2" of tape liner from each flange. Using a marker, number the tape tabs as shown:

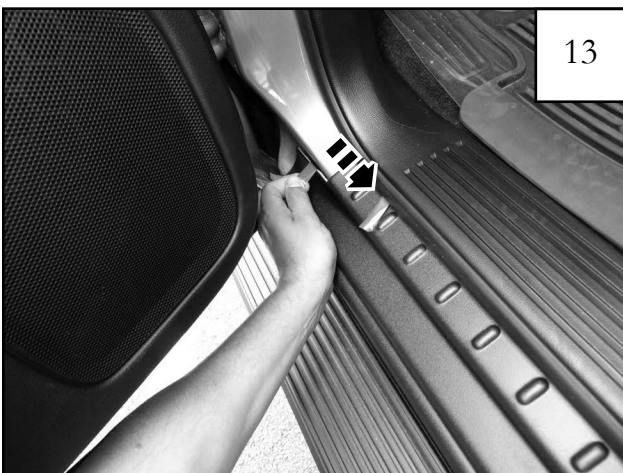
- 1: Tape tab removed in step 13.
- 2: Tape tab removed in step 14.
- 3: Tape tab removed in step 15.
- 4: Tape tab removed in step 16. NOTE: This tab must hang down as shown for removal.
- 5: Tape tab removed in step 17. NOTE: This tab must hang down as shown for removal.
- 6: Tape tab removed in step 18. NOTE: This tab must hang down as shown for removal.



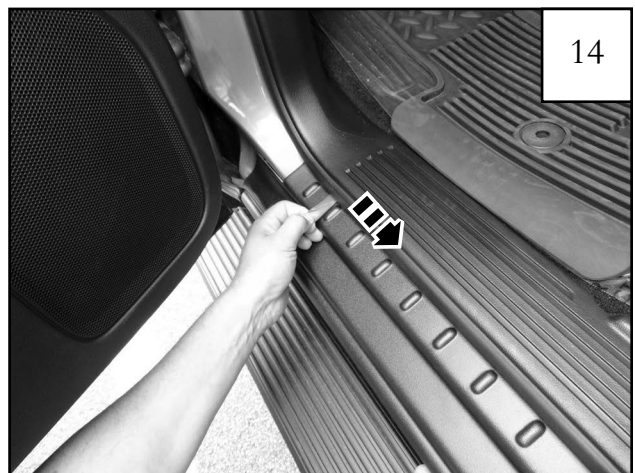
The Front Side Panel installs with the same preparation methods as the rear.



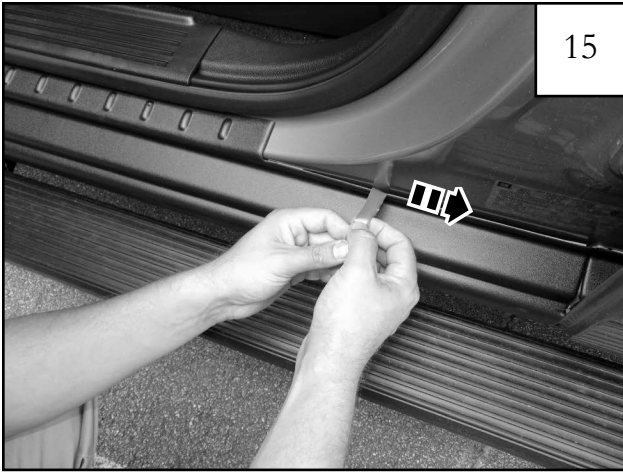
Place part on vehicle, making sure to line up edges of part with edges of vehicle. Ensure that all tape tabs are accessible. Firmly press on exposed areas of tape to tack Trail Armor in place. *NOTE: Refer to step 10 for placement of certain tabs.*



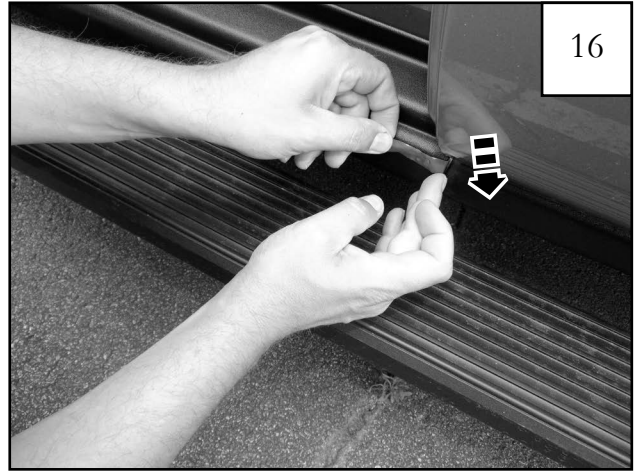
Pull tape liner tab 1.



Pull tape liner tab 2.



Pull tape liner tab 3.



Pull tape liner tab 4.



Pull tape liner tab 5. **NOTE:** It may be necessary to partially close door in order to access tab.



Pull tape liner tab 6. **NOTE:** It may be necessary to partially close door in order to access tab.

19

Once all tape liners are peeled, press down on entire length of part applying strong force to taped areas. *NOTE: The tape reaches maximum adhesive bond after 24 hours of contact. Do not wash vehicle for 24 hours.*

Repeat steps 1-19 for passenger side of truck