

BEHOLD THE USER RECEIVES THIS INSTRUCTION SHEET

BEHOLD THE USER RECEIVES THIS INSTRUCTION SHEET

INSTRUCTION SHEET
1980-84 BUICK D-90 2WD & 4WD PICKUP
1983-84 NISSAN 2WD & 4WD PICKUP
STYLE #1905

PART I

1. This tow bar is designed to be parallel to the ground when it is attached to both the towed and towing vehicles. If the tow bar is at an angle, there is a risk of damage or accident.
2. This tow bar has been designed to tow a manual transmission car or an automatic which has been equipped with a transmission and a drive shaft disconnect or belt which disconnects.
3. The transmission should be placed in neutral when towing.
4. Before the towing starts, to allow the driver wheels of the towed vehicle to rotate.
5. Do not tow any towing vehicle beyond capacity.
6. THE APPLY LABEL IS ON THE LOWER END OF THE BUSHING WHICH IS AT THE FRONT OF THE TOW BAR. THE APPLY LABEL IS NORMALLY USED.
7. Adjust the tension for proper fit by the ball (see the apply label). The adjuster should be used to adjust the tension of the tow bar. Do not use the adjuster to adjust the tension of the tow bar.
8. Check the adjuster to ensure that the tow bar is in the correct position.
9. Most states require lighting at the rear of the towed car. A Blue or Blue/White Lighting Kit or Style 20113 Light Bar is not required.
10. The tow bar is designed to tow a vehicle with a weight of 1000 lbs and a maximum weight of 1000 lbs. The tow bar is designed to tow a vehicle with a weight of 1000 lbs and a maximum weight of 1000 lbs. The tow bar is designed to tow a vehicle with a weight of 1000 lbs and a maximum weight of 1000 lbs.
11. The tow bar is designed to tow a vehicle with a weight of 1000 lbs and a maximum weight of 1000 lbs. The tow bar is designed to tow a vehicle with a weight of 1000 lbs and a maximum weight of 1000 lbs.
12. Avoid sharp turns and sudden braking. Check in ball joint after every several miles and periodically on a long trip.
13. Do not use ground wires for the towing apparatus. This may cause damage to the towed car's electrical system.

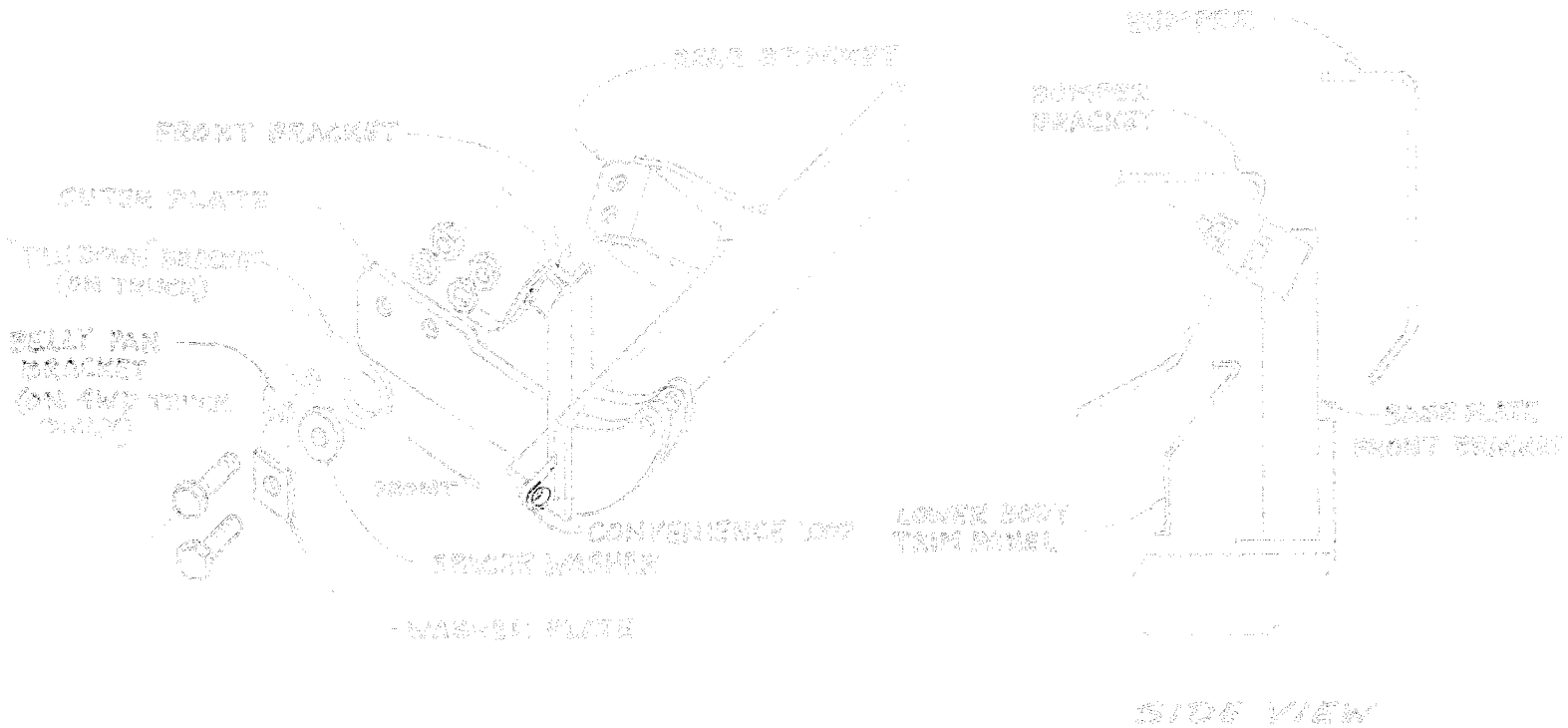
PART II

- | | | |
|-----|------------------------------------|-----------------|
| 1. | 1 - Tow bar (purchased separately) | 14mm socket |
| 2. | 2 - Bush plates | 1/2" socket |
| 3. | 2 - 1/2" diameter pins | 3/8" socket |
| 4. | 2 - Washers (10mm) | 2 - 1/2" wrench |
| 5. | 4 - 1/2" dia x 1 1/2" long pins | |
| 6. | 6 - 1/2"-18 hex nuts | |
| 7. | 4 - 1/2" lockwashers | |
| 8. | 2 - spacer washers | |
| 9. | 2 - washer nuts | |
| 10. | 2 - 1/2"-16 x 1" ball joints | |
| 11. | 2 - 1/2"-16 hex nuts | |
| 12. | 2 - 3/8" lockwashers | |
| 13. | 4 - 10mm-1.25 or 30mm metric pins | |
| 14. | 6 - 10mm lockwashers | |

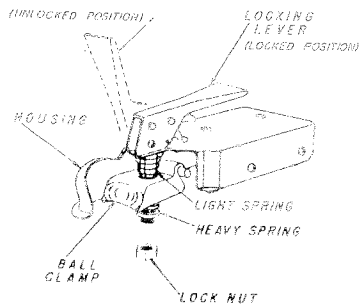
2.7. THE NEW SWIT-O-WAY

1. With all bolts properly installed, you are ready to install the Tow Bar. Hold the Tow Bar in position with the tabs aligned inside the tabs on the Base Plate and insert the pins. Slide the hairpin clip through the holes in the wire.
2. INSTALL A SAFETY CABLE OR CHAIN AND ADJUST THE TENSION. (SEE SKETCHES)
3. Do Not Substitute other devices if the pin and clip are lost.

DOVER-D-40/WHITFIELD SWIT-O-WAY PICKUP

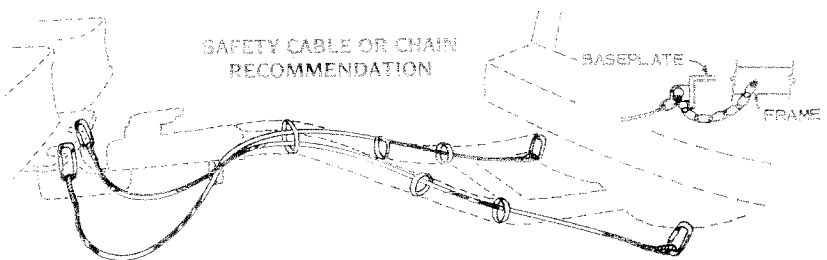


COUPLER FIT ADJUSTMENT



1. Using a 3/4" socket adjust the coupler to the ball by turning the nut. Tighten or loosen the nut until firm contact between coupler and ball is established.
2. Check ball to housing tension periodically and tighten if necessary.
3. Lightly lubricate the ball.

SAFETY CABLE OR CHAIN RECOMMENDATION



1. "X" pattern below Tow Bar solidly connected to the frame of the towing car and to the Base Plate convenience loops.
2. Permanent chains connected to the convenience loops and to the frame of the towed car.
3. Use cable or chain with at least the load rating that is on the coupler.