

25662
06-10 FORD
EXPLORER SPORT



25662
06-10 FORD
EXPLORER SPORT

06-10 FORD EXPLORER SPORT
BILLET BUMPER INSERT

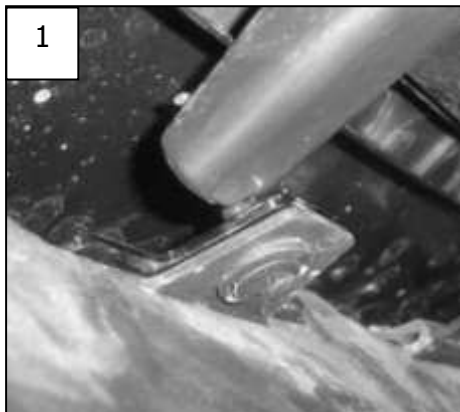
Tools Required:

Phillips / Slotted Screw Drivers
Standard Wrench and Socket Set

Parts List:

1 Billet Insert
4 1/4" x 1" Bolts
4 1/4" Flat Washers
4 1/4" Lock Washers
4 1/4" Nuts

Read and understand instructions before attempting installation

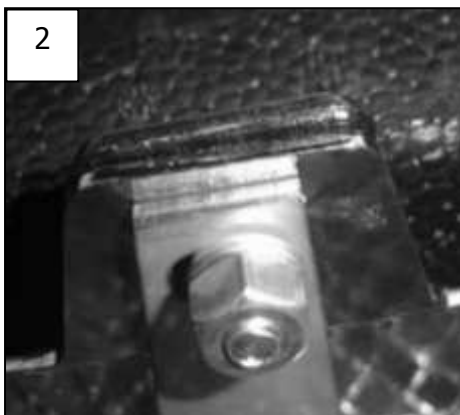


Step 1

Open the hood and remove the plastic retainers holding the lower motor cover to the bumper (1). This will allow access to the backside of the bumper for the grille install.

Step 2

Center the billet insert into the bumper opening. From the backside of the bumper; place a flat washer on the provided bolts. There are plastic tabs that line up with the tabs welded to the billet grille. Place the bolt through both tabs from the top down. Place a lock washer and nut on each bolt (2). Tighten the hardware till snug. Do not over-tighten the hardware.



Step 3

Place the factory motor cover into the factory location. Re-install the factory plastic retainers.

Thank you for purchasing a T-Rex billet grille. 7/17/07