

**25456**  
**09-12 DODGE**  
**RAM**



**25456**  
**09-12 DODGE**  
**RAM**

## **09-12 DODGE RAM** **Bumper Billet Grille**

### **TOOLS REQUIRED:**

Phillips Screwdriver  
1/8" Drill Bit & Drill Motor

### **PARTS LIST**

(2) #8 1.25" 6 Head Screw  
(2) #8 Flat Nuts

### **Step 1**

PLEASE READ AND UNDERSTAND ALL INSTRUCTIONS BEFORE ATTEMPTING INSTALLATION. The first step of the installation is to take the billet grille and insert it into the plastic section of the bumper. Next take a drill and drill through the 2 small brackets (Fig 1) with holes in them on the back side of the billet and through the black plastic of the bumper. (Fig 2)

### **Step 2**

Insert a #8 screw through the small bracket with the hole in it and through the black plastic section of the bumper. From behind the bumper install a flat nut on the back side of the screw and tighten with a phillips screwdriver. (Fig 3) Repeat this on the other small bracket that is welded on the backside of the billet. Installation complete.

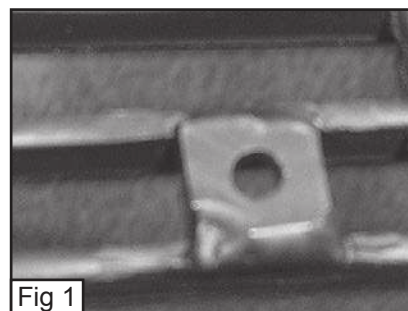


Fig 1

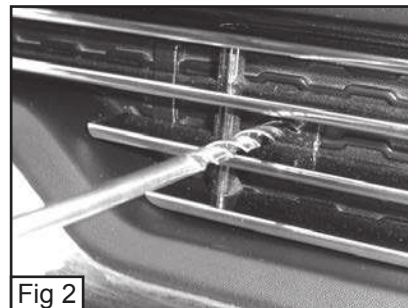


Fig 2

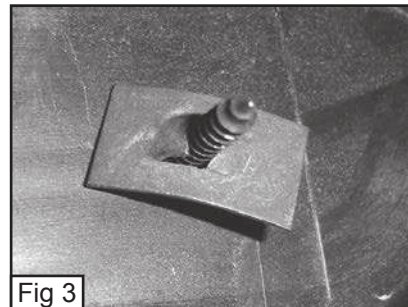


Fig 3