



INSTALLATION INSTRUCTIONS

PART NUMBER: SU-4007

This filter fits: SEE CATALOG FOR CURRENT APPLICATIONS

* FREE K&N® decal To register your warranty, please see us online at knfilters.com/register. FREE K&N® decal *

Congratulations, you have purchased the finest air filter that money can buy. With proper care, this filter will last 1 million miles or more. This filter is a direct replacement for the stock air filter, and no modification will be required. However the following procedures MUST be followed to ensure the proper fit and seal of the K&N® air filter.

INSTALLATION:

1. Remove the stock air filter according to the service manual.
2. Wipe away any dirt and dust from the inside of the air filter housing. (Fig. 1)
NOTE: A damp cloth can be used to clean the inside of the air filter housing.
3. Install the K&N® air filter into the airbox lid and align the air filter into the groove. (Fig. 2)
4. Once the K&N® air filter is properly installed in the airbox lid, hold the filter securely onto the lid while installing the assembly onto the airbox base. Ensure that the airbox lid tabs seat into the hinge points properly, then reinstall the factory screws. (Fig. 3, Fig. 4)
5. To verify proper installation ensure the lid is flush with the airbox base. (Fig. 5)

THESE INSTRUCTIONS MUST BE FOLLOWED EVERY TIME THE FILTER IS SERVICED, OTHERWISE THE FILTER MAY NOT SEAL, AND DAMAGE TO THE ENGINE COULD RESULT.



Fig. 1



Fig. 2



Fig. 3



Fig. 4

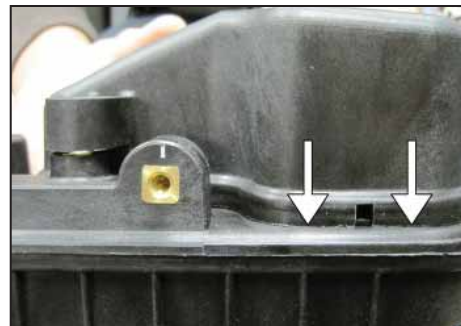


Fig. 5