



INSTALLATION INSTRUCTIONS

Part Number: HA-1110

This filter fits: See catalog for current applications

* FREE K&N® decal To register your warranty, please see us online at knfilters.com/register. FREE K&N® decal *

Congratulations, you have purchased the finest air filter that money can buy. With proper care, this filter will last 1 million miles or more. This filter is a direct replacement for the stock air filter, and no modification will be required. However the following procedures MUST be followed to ensure the proper fit and seal of the K&N® air filter.

INSTALLATION:

1. Remove the O.E. filter per service manual. Save the 2 holding screws from the O.E. filter, they will be used to install the K&N® air filter.
2. Place the K&N® air filter onto the air box base with the K&N logo facing upward. The K&N® air filter will only fit one way (**Fig. 1**).
3. Slide the washers onto the screws, thread them through the air filter base plate holes and into the threaded holes of the air box base (**Fig. 2**).
4. Tighten down the screws until each screw firmly sandwiches the washer between it and the base plate (**Fig 3**).
5. Once the screws are tightened as described in step 4, tighten each screw 2 ½ turns.
6. Install the air box lid per service manual.

THESE INSTRUCTIONS MUST BE FOLLOWED EVERY TIME THE FILTER IS SERVICED, OTHERWISE THE FILTER MAY NOT SEAL, AND DAMAGE TO THE ENGINE COULD RESULT.



Fig. 1



Fig. 2

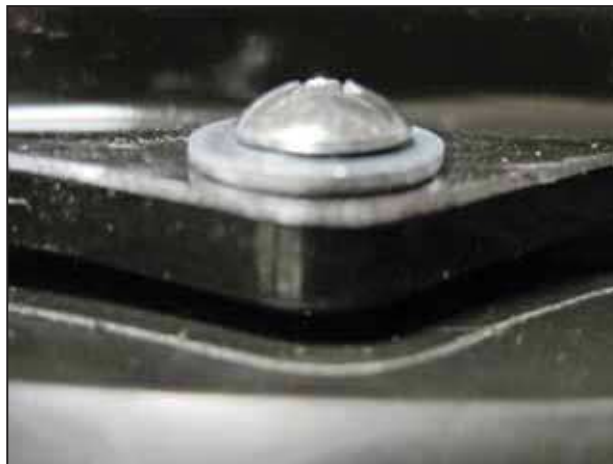


Fig. 3